

TBM TOP NE CORNER LOADING DOCK  
ELEV.=17.48

CONTRACTOR TO REMOVE/REPLACE EXISTING  
INFLUENT JUNCTION BOX "SEE SHTS. 17B, C & D"  
(BID ADDITIVE) ⚠

TEMPORARY BY-PASS  
FORCE MAIN ROUTE

CONTRACTOR TO PROVIDE PLUGS FOR FLOW  
DIVERSION OF 54" & 36" INFLUENT PIPES.  
(BID ADDITIVE) ⚠

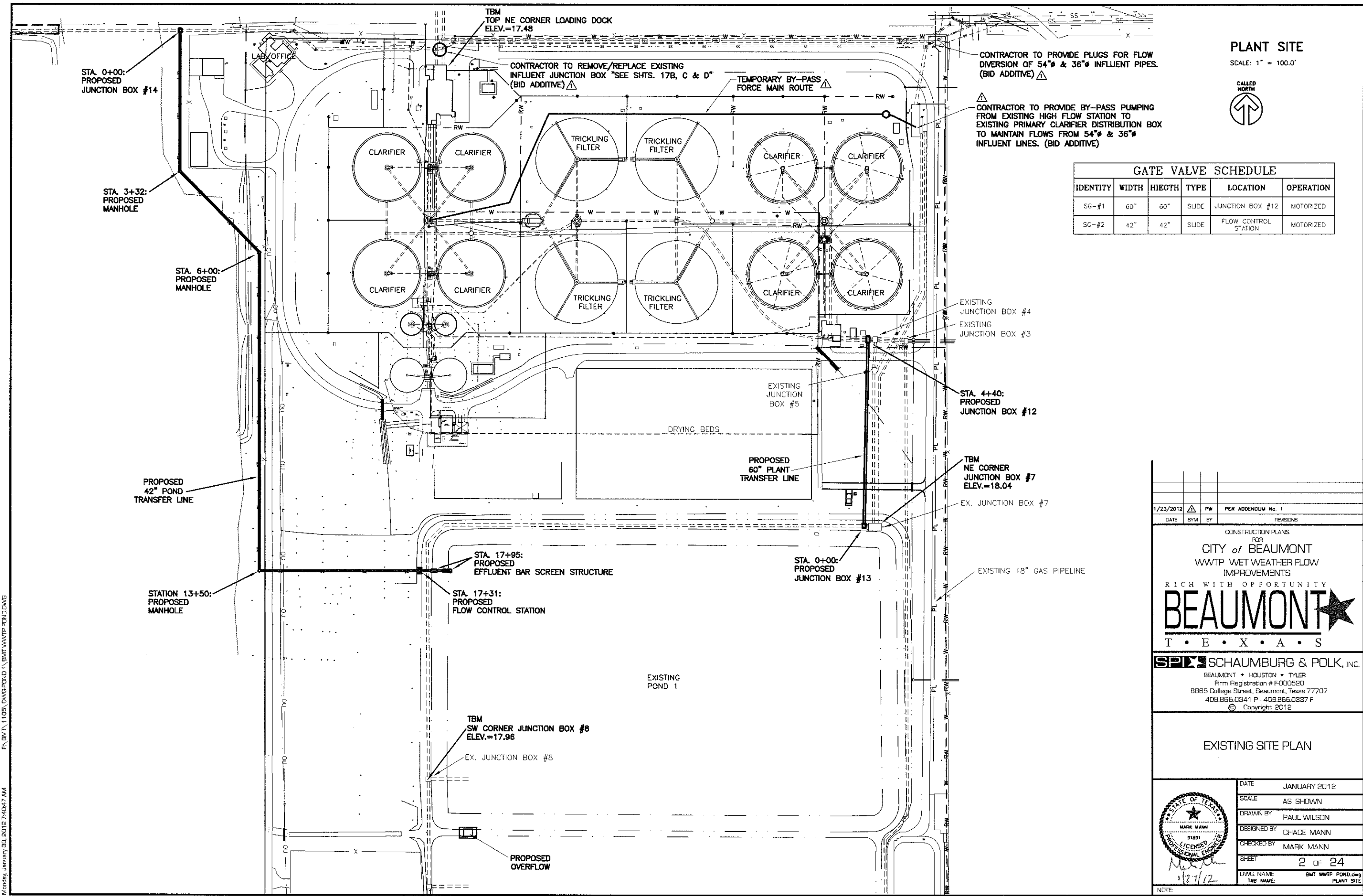
CONTRACTOR TO PROVIDE BY-PASS PUMPING  
FROM EXISTING HIGH FLOW STATION TO  
EXISTING PRIMARY CLARIFIER DISTRIBUTION BOX  
TO MAINTAIN FLOWS FROM 54" & 36"  
INFLUENT LINES. (BID ADDITIVE)

**PLANT SITE**

SCALE: 1" = 100.0'



GATE VALVE SCHEDULE					
IDENTITY	WIDTH	HIEGTH	TYPE	LOCATION	OPERATION
SG-#1	60"	60"	SLIDE	JUNCTION BOX #12	MOTORIZED
SG-#2	42"	42"	SLIDE	FLOW CONTROL STATION	MOTORIZED



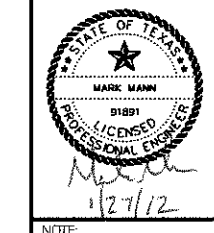
1/23/2012	△	PW	PER ADDENDUM No. 1
DATE	SYM	BY	REVISIONS

CONSTRUCTION PLANS  
FOR  
**CITY of BEAUMONT**  
WWTW WET WEATHER FLOW  
IMPROVEMENTS  
RICH WITH OPPORTUNITY  
**BEAUMONT** ★  
T • E • X • A • S

**SPX SCHAUMBURG & POLK, INC.**  
BEAUMONT • HOUSTON • TYLER  
Firm Registration # F-000520  
8865 College Street, Beaumont, Texas 77707  
409.866.0341 P - 409.866.0337 F  
© Copyright: 2012

**EXISTING SITE PLAN**

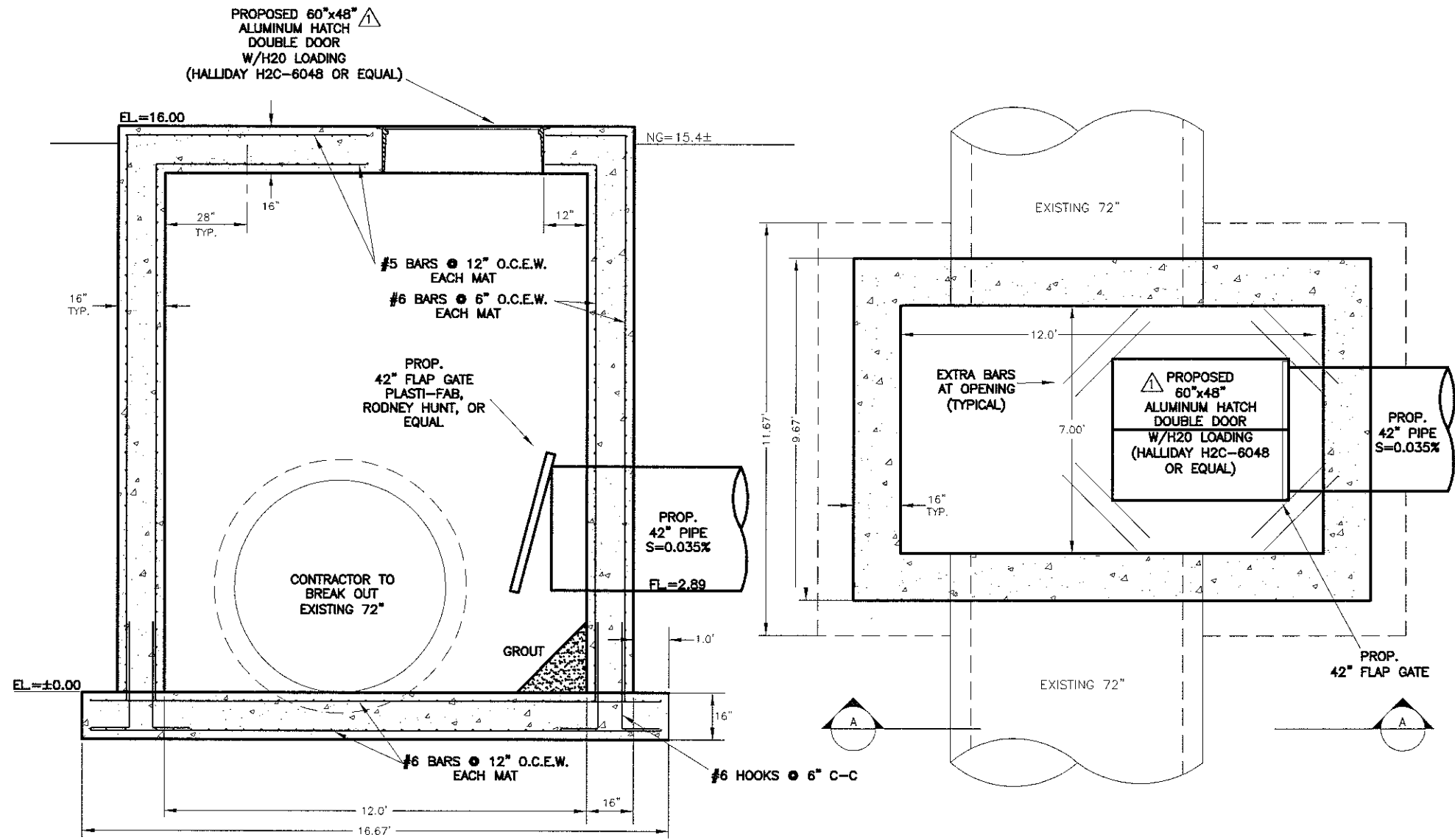
DATE	JANUARY 2012
SCALE	AS SHOWN
DRAWN BY	PAUL WILSON
DESIGNED BY	CHASE MANN
CHECKED BY	MARK MANN
SHEET	2 OF 24
DWG. NAME	BMT WWTW POND.dwg
TAB NAME	PLANT SITE



Monday, January 30, 2012 7:40:47 AM F:\BMT\_1105.DWG\POND 1\BMT WWTW POND.DWG

F:\BMT\1105.DWG\FOND\1\BMT WWTW POND.DWG

Monday, January 30, 2012 7:40:54 AM



SECTION "A-A"  
SCALE: 1"=2'

JUNCTION BOX #14

PLAN VIEW  
SCALE: 1"=2'

DATE	1/23/2012	BY	PW	PER ADDENDUM No. 1
DATE		BY		REVISIONS

CONSTRUCTION PLANS  
FOR  
CITY of BEAUMONT  
WWTW WET WEATHER FLOW  
IMPROVEMENTS  
RICH WITH OPPORTUNITY  
**BEAUMONT** ★  
T • E • X • A • S

**SPX SCHAUMBURG & POLK, INC.**  
BEAUMONT • HOUSTON • TYLER  
Firm Registration # F-000520  
8865 College Street, Beaumont, Texas 77707  
409.866.0341 F - 409.866.0337 F  
© Copyright 2012

PROPOSED JUNCTION BOX 14

DATE	JANUARY 2012
SCALE	AS SHOWN
DRAWN BY	PAUL WILSON
DESIGNED BY	CHACE MANN
CHECKED BY	MARK MANN
SHEET	10 OF 24
DWG. NAME	BMT WWTW_POND.dwg

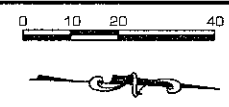
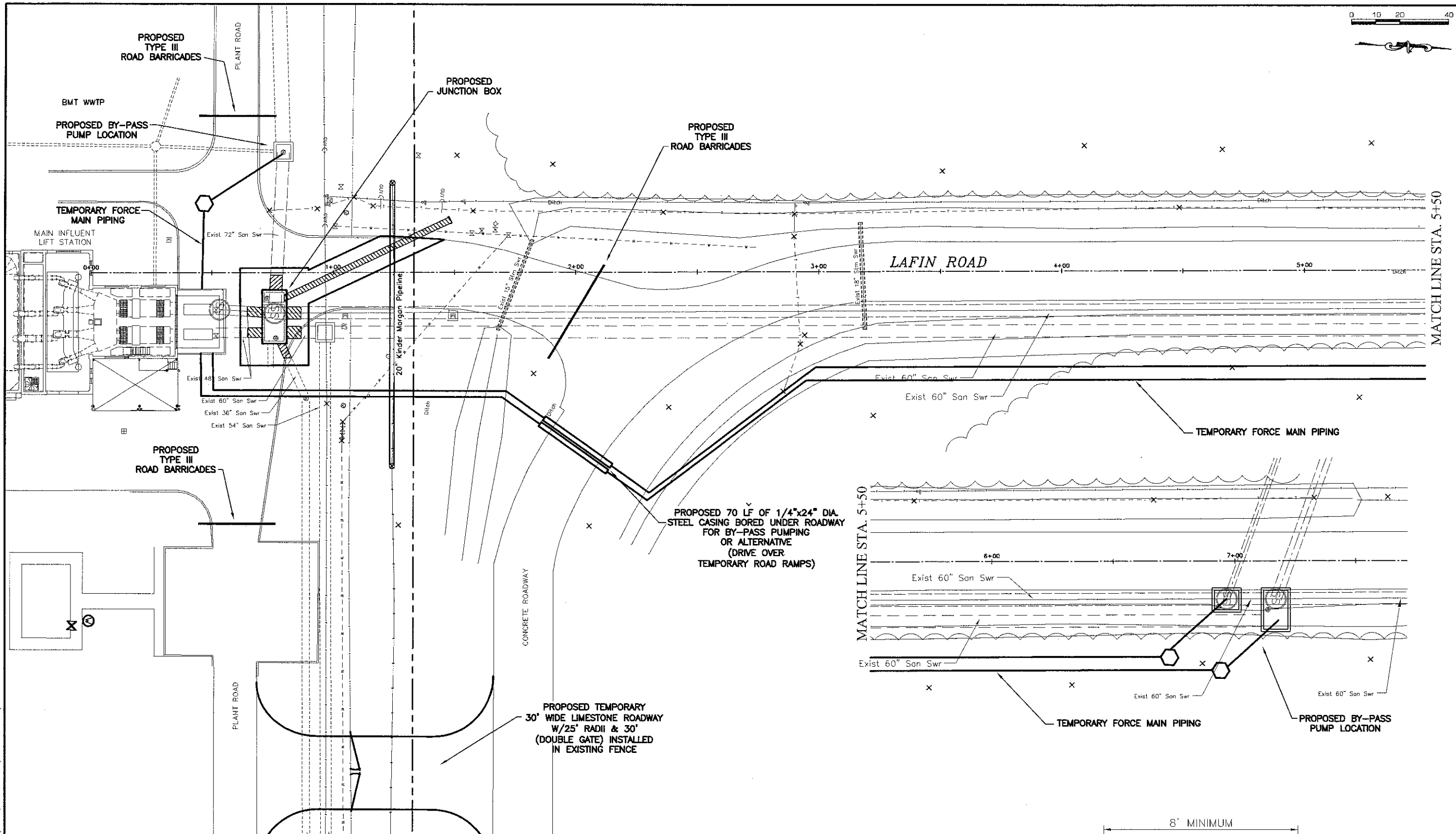
NOTE



*Mark Mann*  
1/27/12

F:\BMT\1105\DWG\RD\T\_JUNCTION\_BOX\_JUNCTION\_BOX.DWG

Monday, January 30, 2012 7:38:26 AM

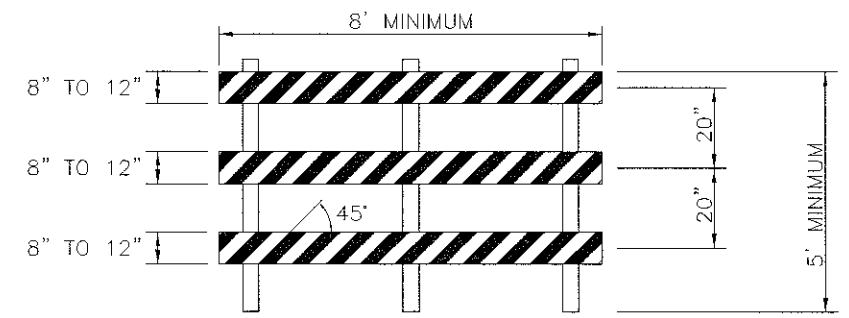


MATCH LINE STA. 5+50

MATCH LINE STA. 5+50

CONTRACTOR TO PLUG 54" AND 36" SEWER LINES AT JUNCTION BOX IN THE NORTH EAST CORNER OF PLANT. PROVIDE BY-PASS PUMPING FROM EXISTING HIGH FLOW STATION (SEE SHEET 2 OF 26)

- NOTES:**
- CONTRACTOR TO FURNISH AND INSTALL ALL NECESSARY PLUGS, GATES OR APPROVED METHODS TO ISOLATE FLOW IN THE EXISTING 72", DUAL 60", 54" AND 36" INFLUENT LINES.
  - CONTRACTOR TO PROVIDE ALL NECESSARY BY-PASS PUMPS, PIPING, CONTROLS, FITTINGS AND ROAD CROSSING TO MAINTAIN FLOWS FOR:  
20 MGD ADF  
50 MGD PEAK
  - CONTRACTOR TO FURNISH AND INSTALL A TEMPORARY LIMESTONE ENTRANCE ROAD AND INSTALL A 20' SWING GATE ON THE EXISTING FENCE. FURNISH NECESSARY TRAFFIC CONTROL DEVICES.



**TYPE III BARRICADE**  
SCALE: NTS

BEAUMONT • HOUSTON • TYLER Firm Registration # F000560 8665 Collage Street, Beaumont, Texas 77707 409.656.0041 P. 409.656.0037 F © Copyright 2010	
DATE	BY
7/2012	PW
PER	ADDENDUM No. 1

RICH WITH OPPORTUNITY

**BEAUMONT**

T • E • X • A • S

CONSTRUCTION PLANS  
FOR  
CITY OF BEAUMONT  
WWTP WET WEATHER FLOW  
IMPROVEMENTS  
(BID ADDITIVE)  
INFLUENT JUNCTION BOX

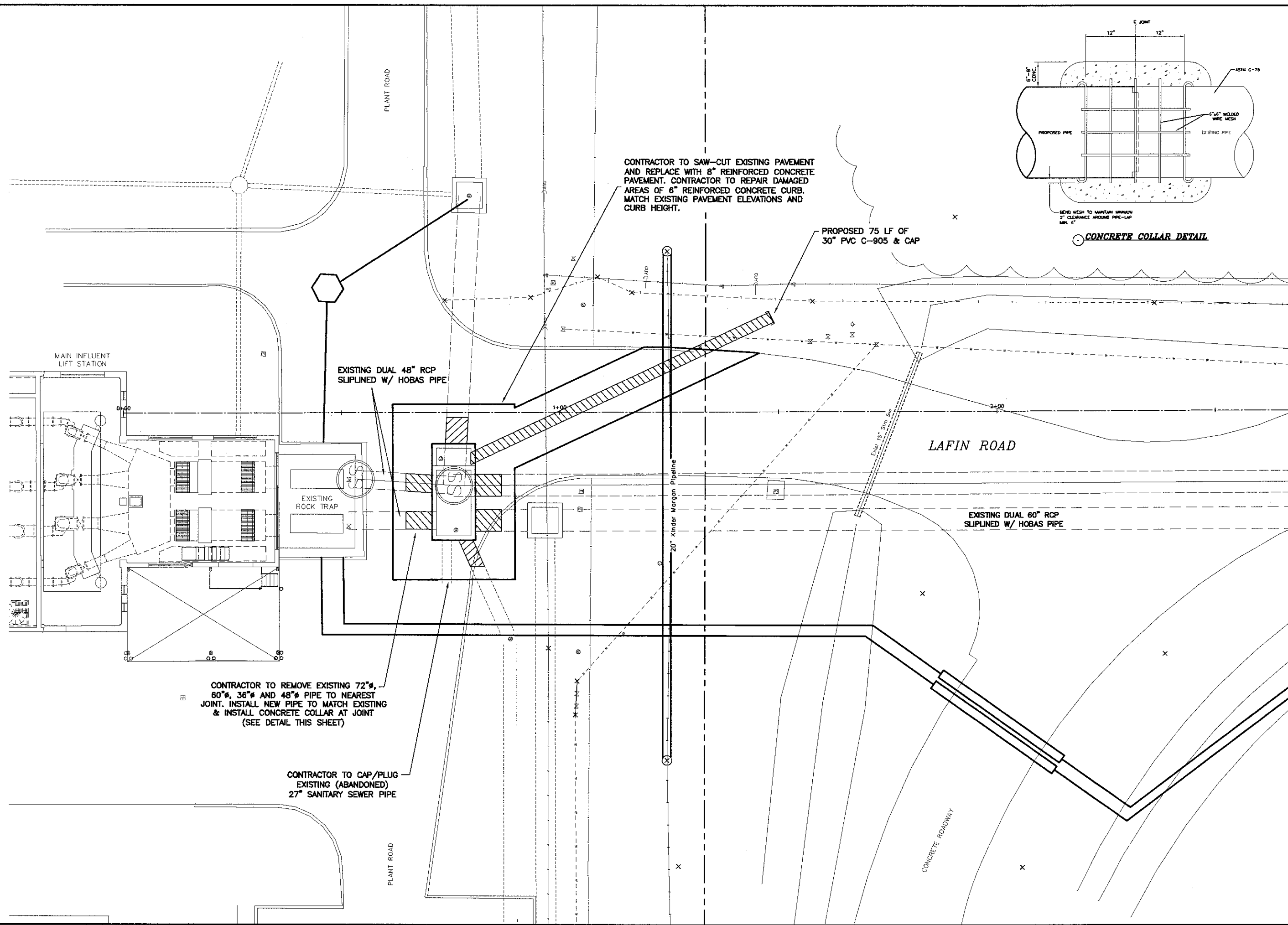
ENGINEER'S SEAL

Mark Mann  
1/27/12

DATE	JAN. 2012
SCALE	1" = 20'
DRAWN BY	TW/PW
DESIGNED BY	NB
CHECKED BY	MM
SHEET	17B OF 24

EX: BMT\1105\DWG\RD 1\JUNCTION BOX\JUNCTION BOX.DWG

Monday, January 30, 2012 7:38:11 AM



CONTRACTOR TO SAW-CUT EXISTING PAVEMENT AND REPLACE WITH 8" REINFORCED CONCRETE PAVEMENT. CONTRACTOR TO REPAIR DAMAGED AREAS OF 6" REINFORCED CONCRETE CURB. MATCH EXISTING PAVEMENT ELEVATIONS AND CURB HEIGHT.

PROPOSED 75 LF OF 30" PVC C-905 & CAP

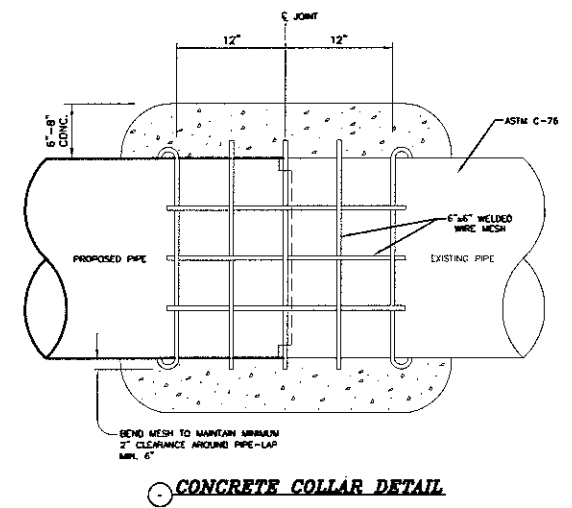
EXISTING DUAL 48" RCP SLIPLINED W/ HOBAS PIPE

EXISTING ROCK TRAP

EXISTING DUAL 60" RCP SLIPLINED W/ HOBAS PIPE

CONTRACTOR TO REMOVE EXISTING 72", 60", 36" AND 48" PIPE TO NEAREST JOINT. INSTALL NEW PIPE TO MATCH EXISTING & INSTALL CONCRETE COLLAR AT JOINT (SEE DETAIL THIS SHEET)

CONTRACTOR TO CAP/PLUG EXISTING (ABANDONED) 27" SANITARY SEWER PIPE



DATE	SYMBOL	BY	PER APPENDIX No. 1	REVISIONS
1/2012		PW		

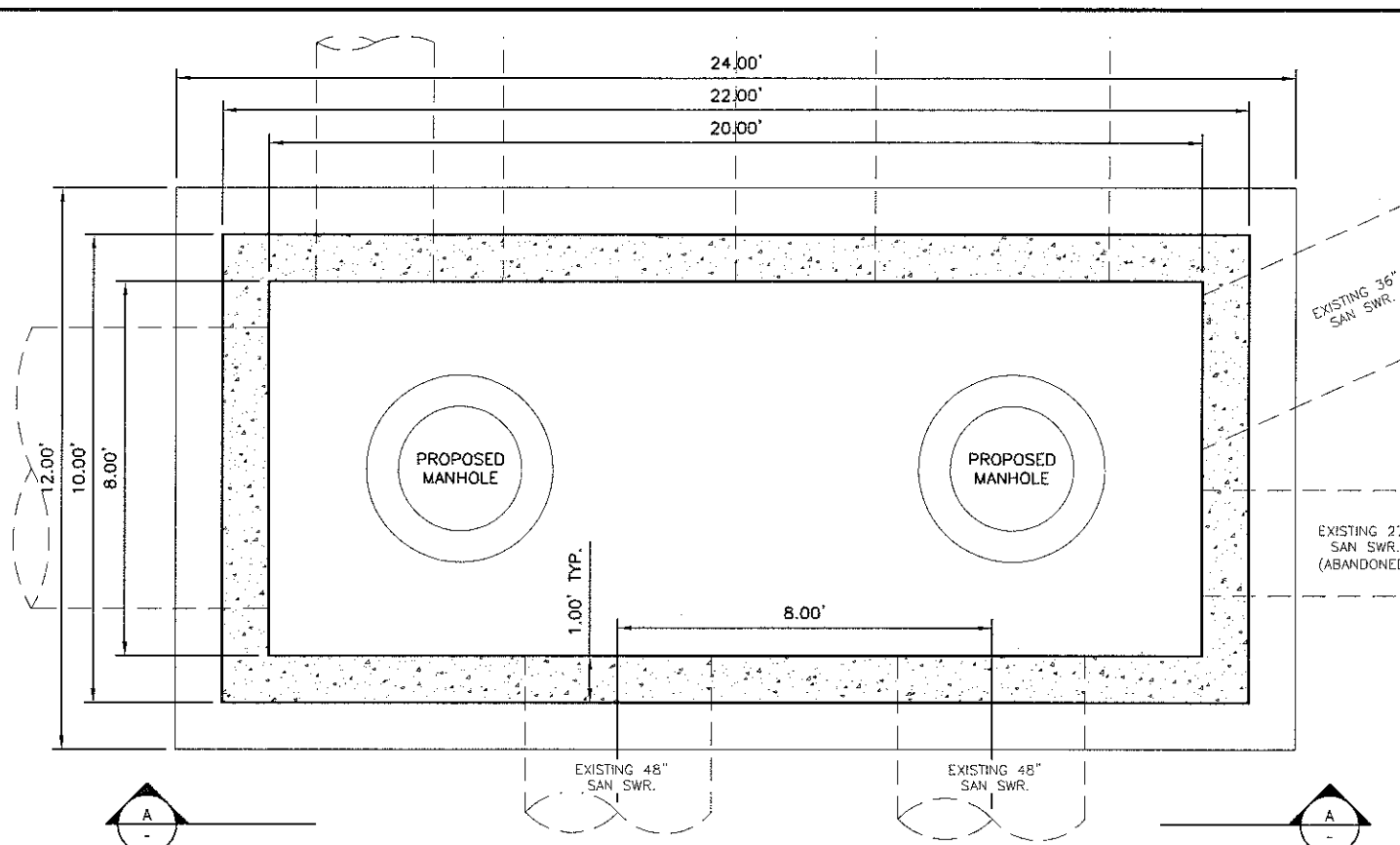
**SPS SCHAUMBURG & POLK, INC.**  
 BEAUMONT • HOUSTON • TYLER  
 Firm Registration # F000950  
 8865 College Street, Beaumont, Texas 77707  
 409.855.0341 P. 409.855.0337 F  
 © Copyright 2010

RICH WITH OPPORTUNITY  
**BEAUMONT**  
 T • E • X • A • S

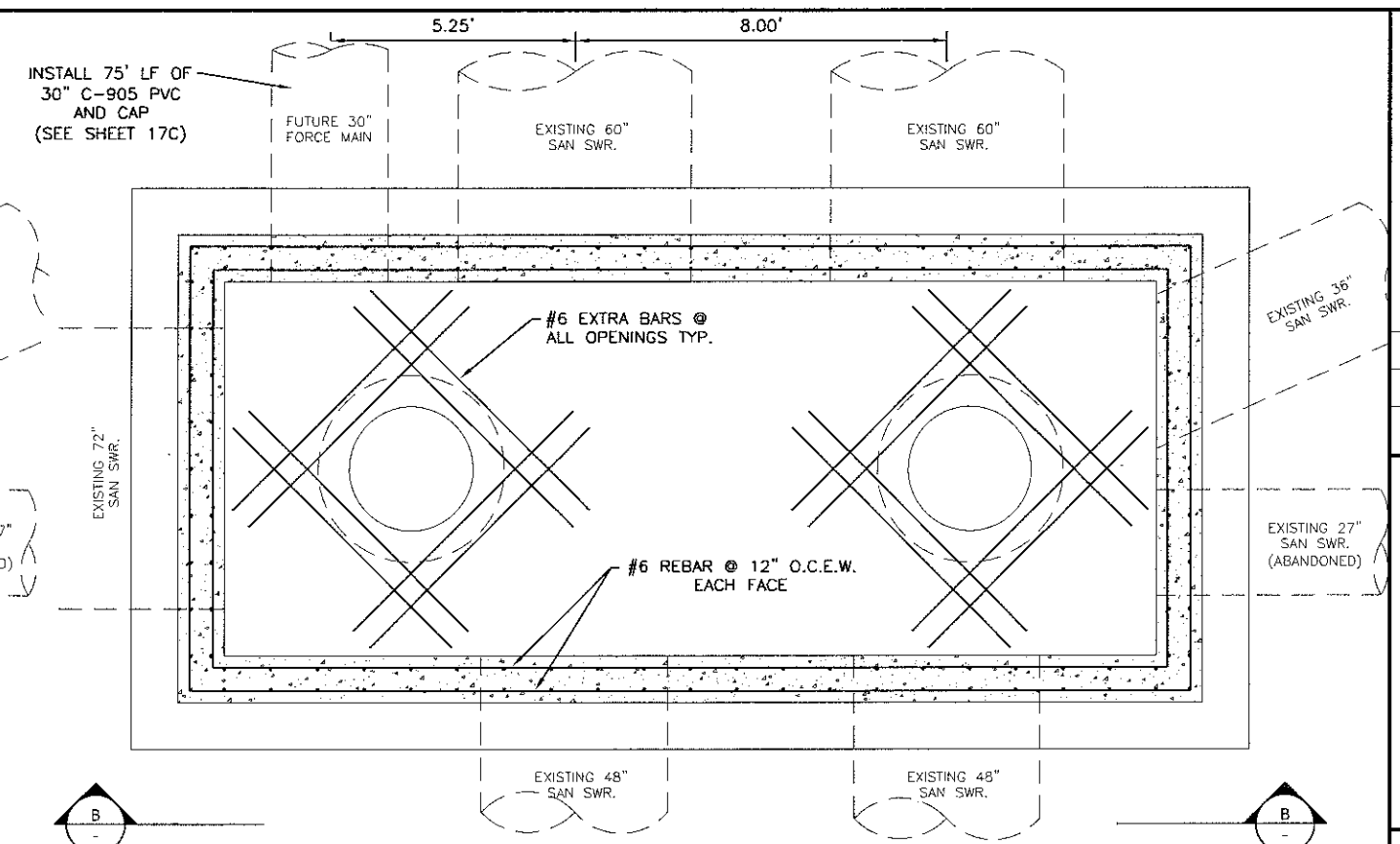
CONSTRUCTION PLANS FOR  
**CITY of BEAUMONT**  
 WWTP WET WEATHER FLOW IMPROVEMENTS (BID ADDITIVE)  
 JUNCTION BOX ENLARGED PLAN

ENGINEER'S SEAL  
  
 Mark Mann  
 1/27/12

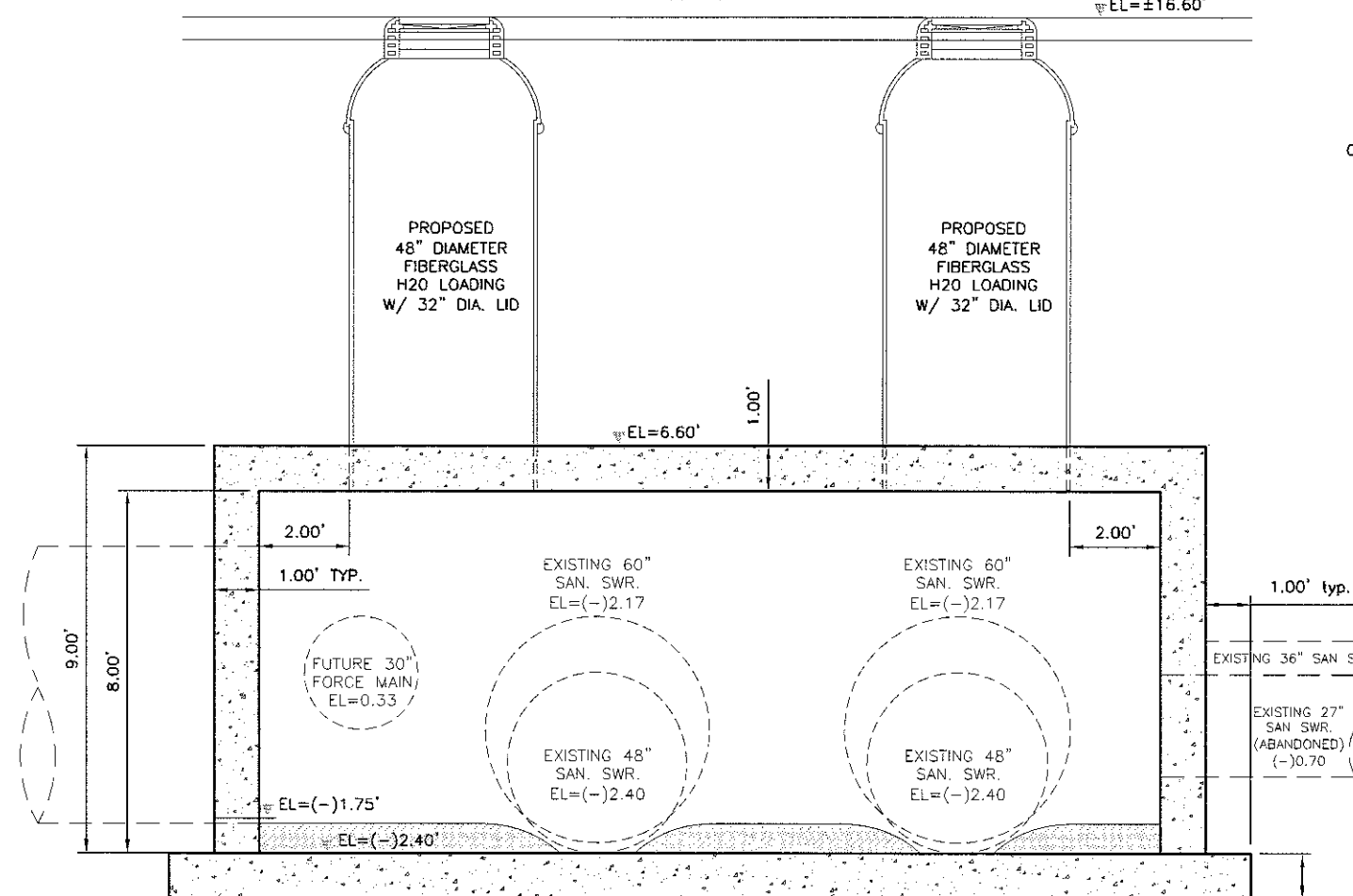
DATE: JAN. 2012  
 SCALE: 1" = 10'  
 DRAWN BY: TW/PW  
 DESIGNED BY: NB  
 CHECKED BY: MM  
 SHEET:  
**17C OF 24**



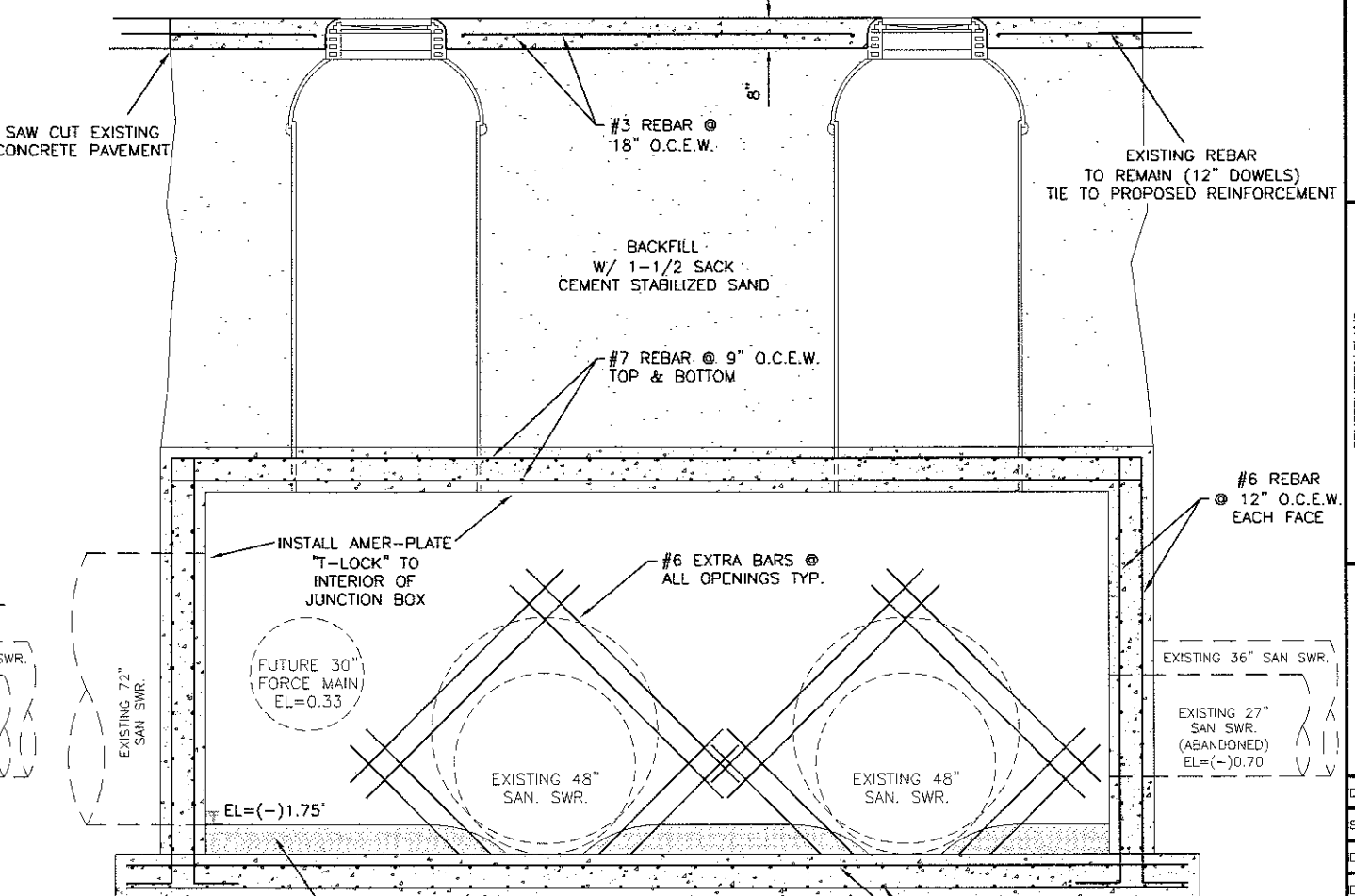
**PROPOSED JUNCTION BOX  
PLAN VIEW**  
SCALE: 1"=2'



**PROPOSED JUNCTION BOX  
PLAN VIEW**  
SCALE: 1"=2'



**SECTION "A-A"**  
SCALE: 1"=2'



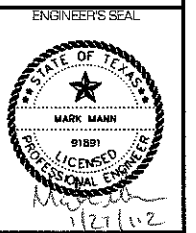
**SECTION "B-B"**  
SCALE: 1"=2'

Monday, January 30, 2012 7:36:50 AM F:\BMT\1105\DWG\POUND 1\ JUNCTION BOX\ JUNCTION BOX.DWG

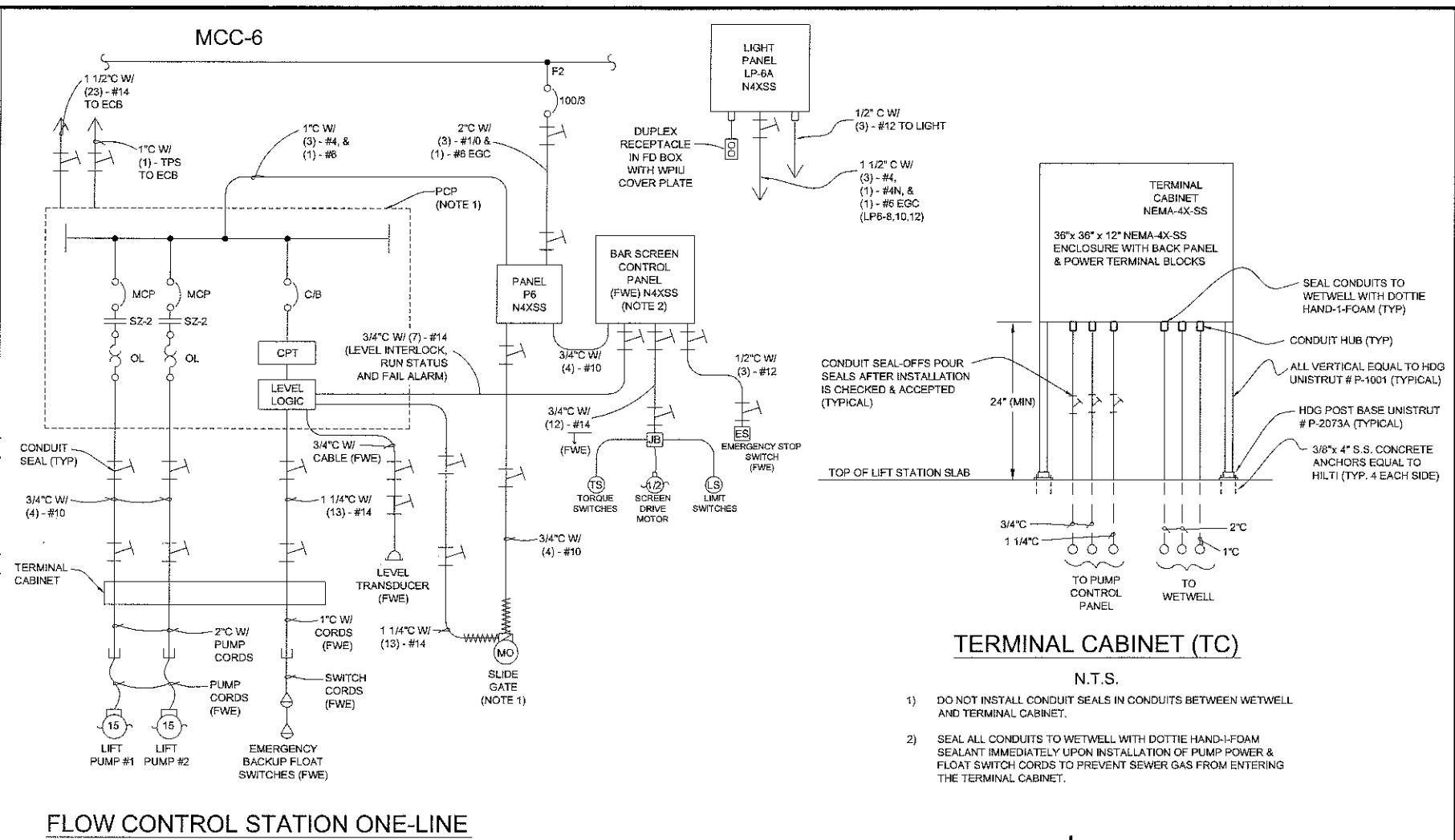
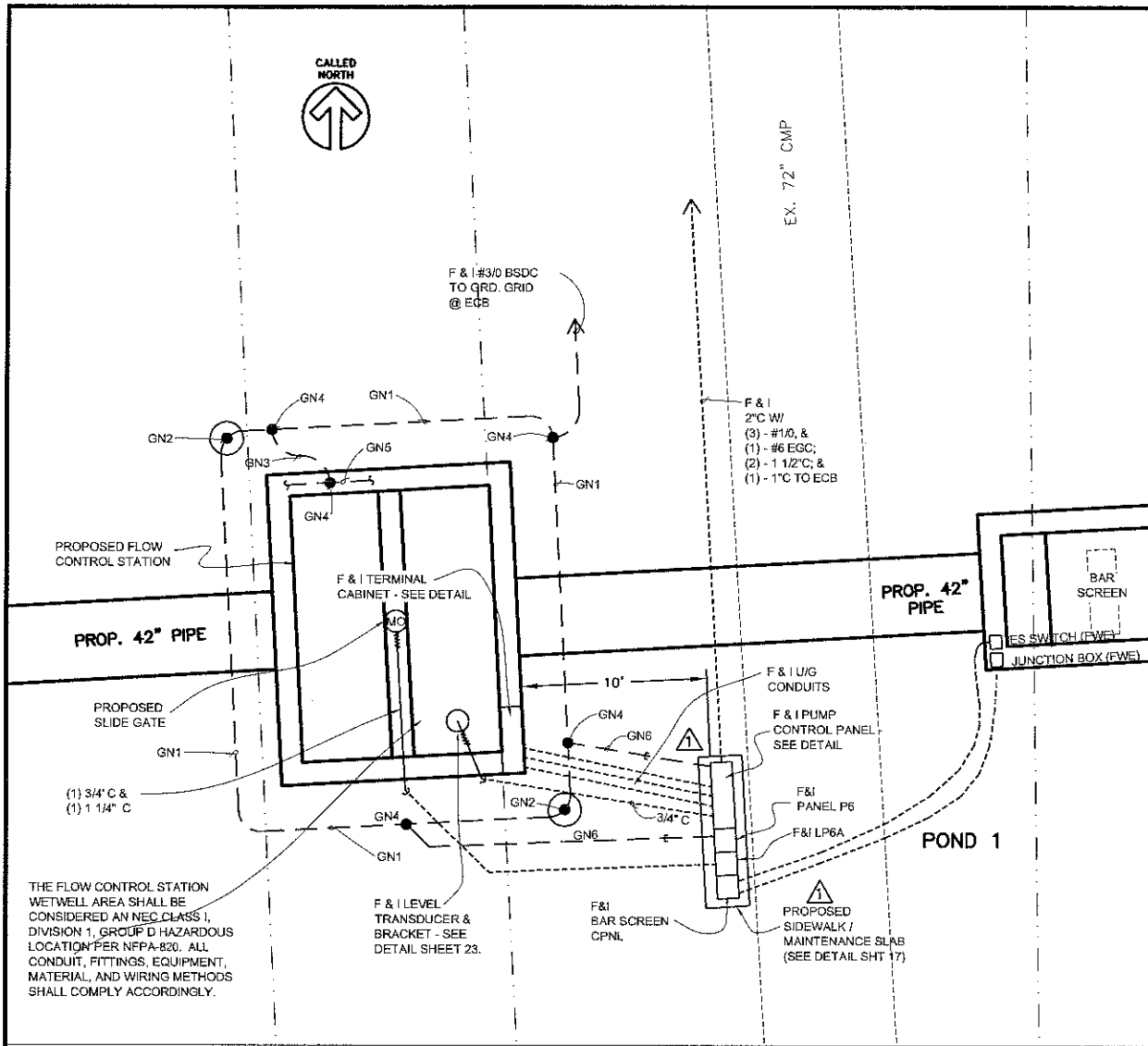
DATE	1/20/12	BY	
SYMBOL			
REVISIONS			
NO.		DESCRIPTION	
1		PER ADDENDUM No. 1	

**BEAUMONT**  
T • E • X • A • S  
RICH WITH OPPORTUNITY

CONSTRUCTION PLANS  
FOR  
**CITY OF BEAUMONT**  
WWTP WET WEATHER FLOW  
IMPROVEMENTS  
(BID ADDITIVE)  
INFLUENT JUNCTION BOX DETAILS



DATE	JAN. 2012
SCALE	AS SHOWN
DRAWN BY	TW/PW
DESIGNED BY	NB
CHECKED BY	MM
SHEET	17D OF 24

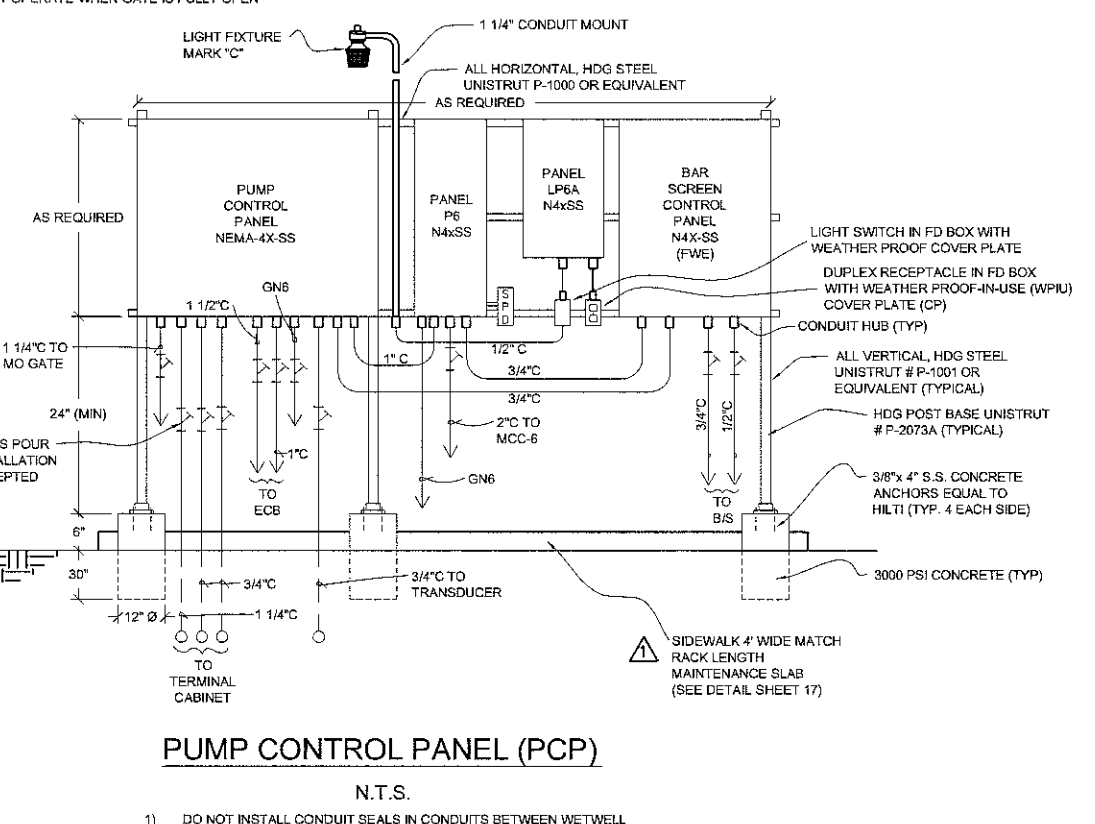


**PROPOSED PANEL "P-6" SCHEDULE**  
100A, 480V, 3 φ, 3W, 22 KAIC, 24 SPACE, NEMA-4X-SS  
LOCATE AT FLOW CONTROL STRUCTURE

SPACE	1	2	SPACE		
SPACE	3	4	SPACE		
SPACE	5	6	SPACE		
SPACE	7	8	SPACE		
SPACE	9	10	SPACE		
SPACE	11	12	SPACE		
BAR SCREEN CPNL	30/3	13	14	30/3	SLIDE GATE MO
BAR SCREEN CPNL	15	16	20/1	SLIDE GATE MO	
BAR SCREEN CPNL	17	18	20/1	SLIDE GATE MO	
SPD	20/3	19	60/3	PUMP CONTROL PANEL	
SPD	21	22	20/1	PUMP CONTROL PANEL	
SPD	23	24	20/1	PUMP CONTROL PANEL	
RECEPTACLE *	20/1	23	24	20/1	AREA LIGHT

**PROPOSED LIGHTING PANEL "LP-6A" SCHEDULE**  
100A, 120V/208V, 3 φ, 4W, 10 KAIC, 24 SPACE, NEMA-4X-SS  
LOCATE AT FLOW CONTROL STRUCTURE  
\*GFCI

SPACE	1	2	SPACE	
SPACE	3	4	SPACE	
SPACE	5	6	SPACE	
SPACE	7	8	SPACE	
SPACE	9	10	SPACE	
SPACE	11	12	SPACE	
SPACE	13	14	20/1	SPACE
SPACE	15	16	20/1	SPACE
SPACE	17	18	20/1	SPACE
SPACE	19	20	20/1	SPACE
SPACE	21	22	20/1	SPACE
SPACE	23	24	20/1	SPACE



DATE	1/23/2012	BY	PW	PER ADDENDUM No. 1
REVISIONS				

CONSTRUCTION PLANS FOR  
**CITY OF BEAUMONT**  
WWTW WET WEATHER FLOW IMPROVEMENTS  
RICH WITH OPPORTUNITY  
**BEAUMONT** ★  
T • E • X • A • S

**SPI SCHAUMBURG & POLK, INC.**  
BEAUMONT • HOUSTON • TYLER  
Firm Registration #F-000520  
8865 College Street, Beaumont, Texas 77707  
409.866.0341 P - 409.866.0337 F  
© Copyright 2012

**FLOW CONTROL STATION ELECTRICAL SITE PLAN**

DATE	JANUARY 2012
SCALE	AS SHOWN
DRAWN BY	JUSTIN FENLEY
DESIGNED BY	WILLARD JORDAN
CHECKED BY	MARK MANN
SHEET	24 OF 24
DWG. NAME	24-ELECPCS.dwg

NOTE:

Wednesday, January 25, 2012 1:40:50 PM FAX: 409.866.0341 JUSTIN FENLEY, 1105 DWIGG ROAD, JUSTIN FENLEY ELECTRIC, 1105 W WTP FLOW BASIN, CAD PLANS, 24-ELECPCS.DWG